

SPARE PARTS SECTION

PEDESTAL DRILLING MACHINE

Model. PD-28V

Order Code D158

EDITION No : PD-28V-1

DATE OF ISSUE : 06/2023

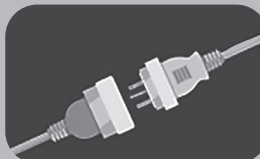
The following section covers the spare parts diagrams and lists that were current at the time this manual was originally printed. Due to continuous improvements of the machine, changes may be made at any time without notification.

HOW TO ORDER SPARE PARTS

1. Have your machines model number, serial number & date of manufacture on hand, these can be found on the specification plate mounted on the machine
2. A scanned copy of your parts list/diagram with required spare part/s identified.

NOTE: SOME PARTS MAY ONLY BE AVAILABLE AS AN ASSEMBLY

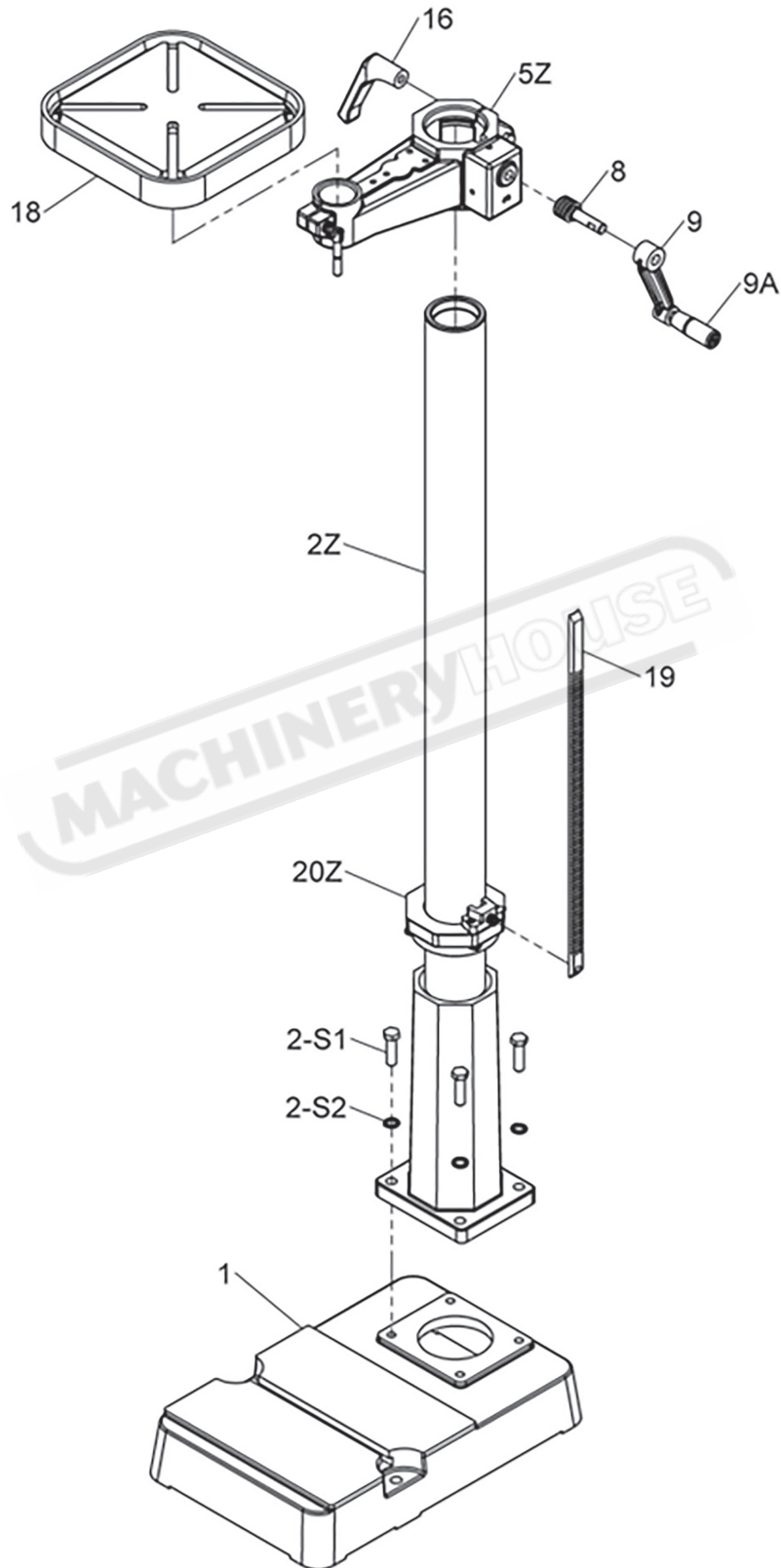
3. Go to www.machineryhouse.com.au/contactus and fill out the inquiry form attaching a copy of scanned parts list.



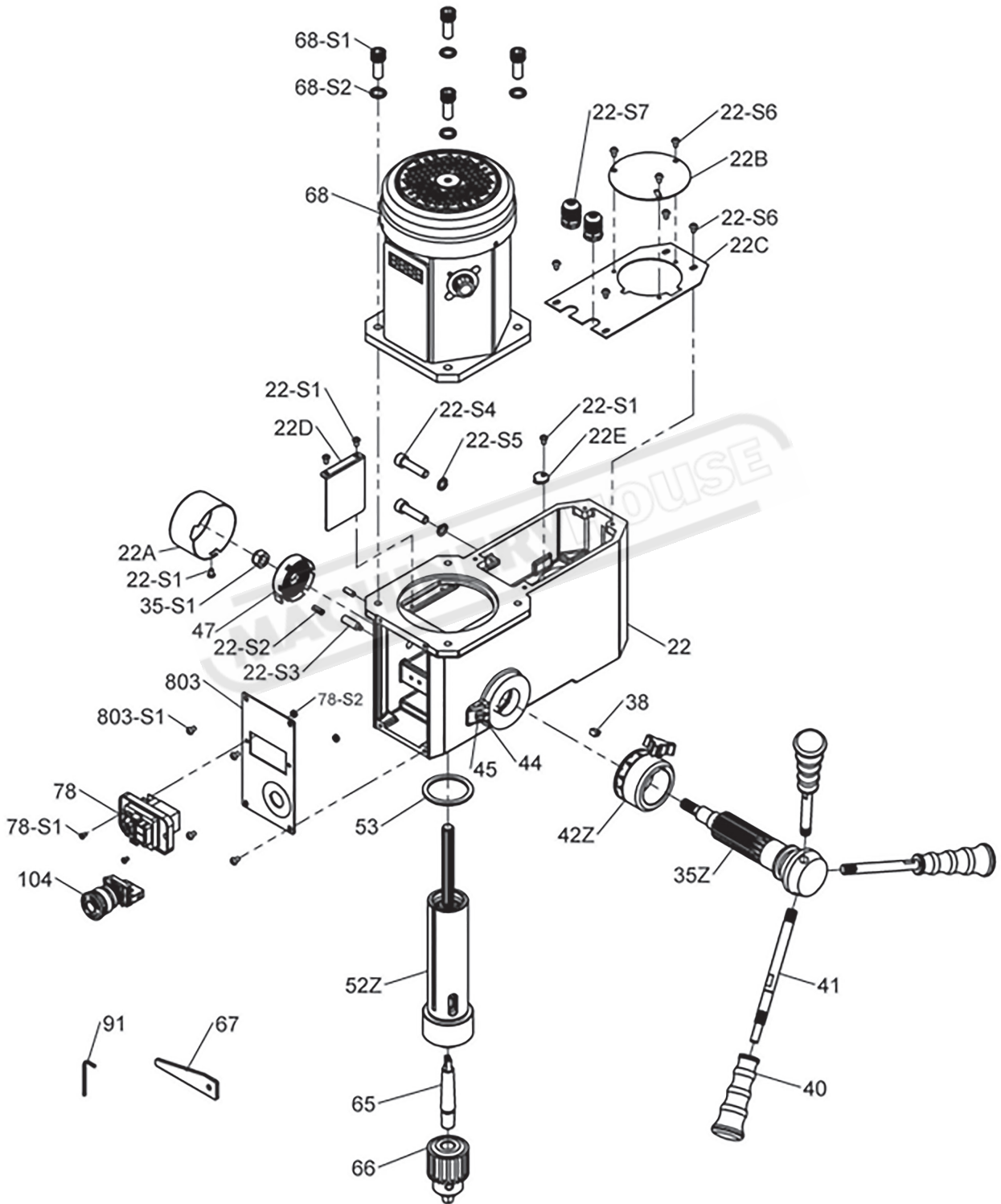
WARNING

Always disconnect the power to the machine before servicing or doing maintenance to the machine.

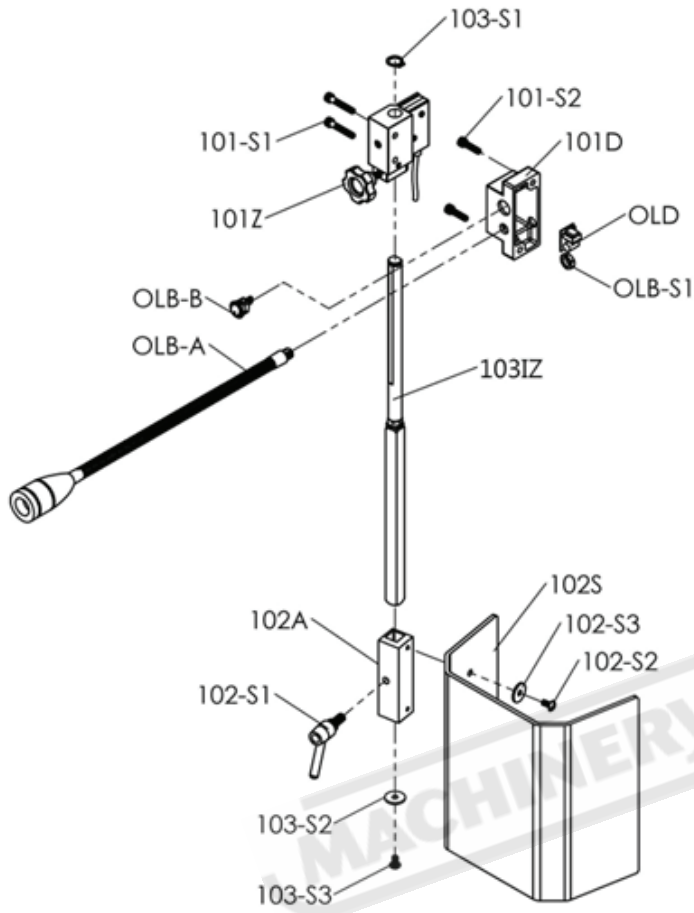
PD-28V SPARE PARTS DIAGRAM



PD-28V SPARE PARTS DIAGRAM

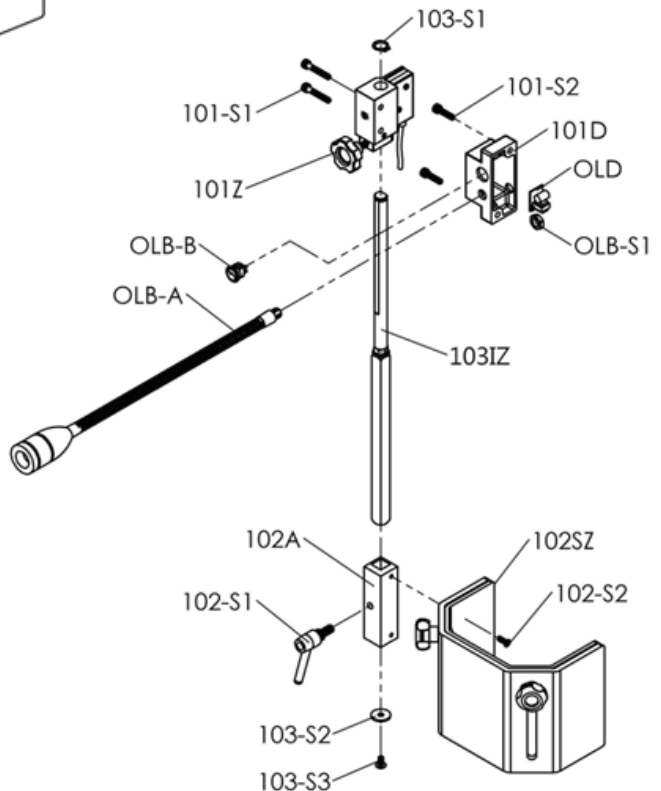


PD-28V SPARE PARTS DIAGRAM



SAFETY GUARD(TELESCOPIC+LED)

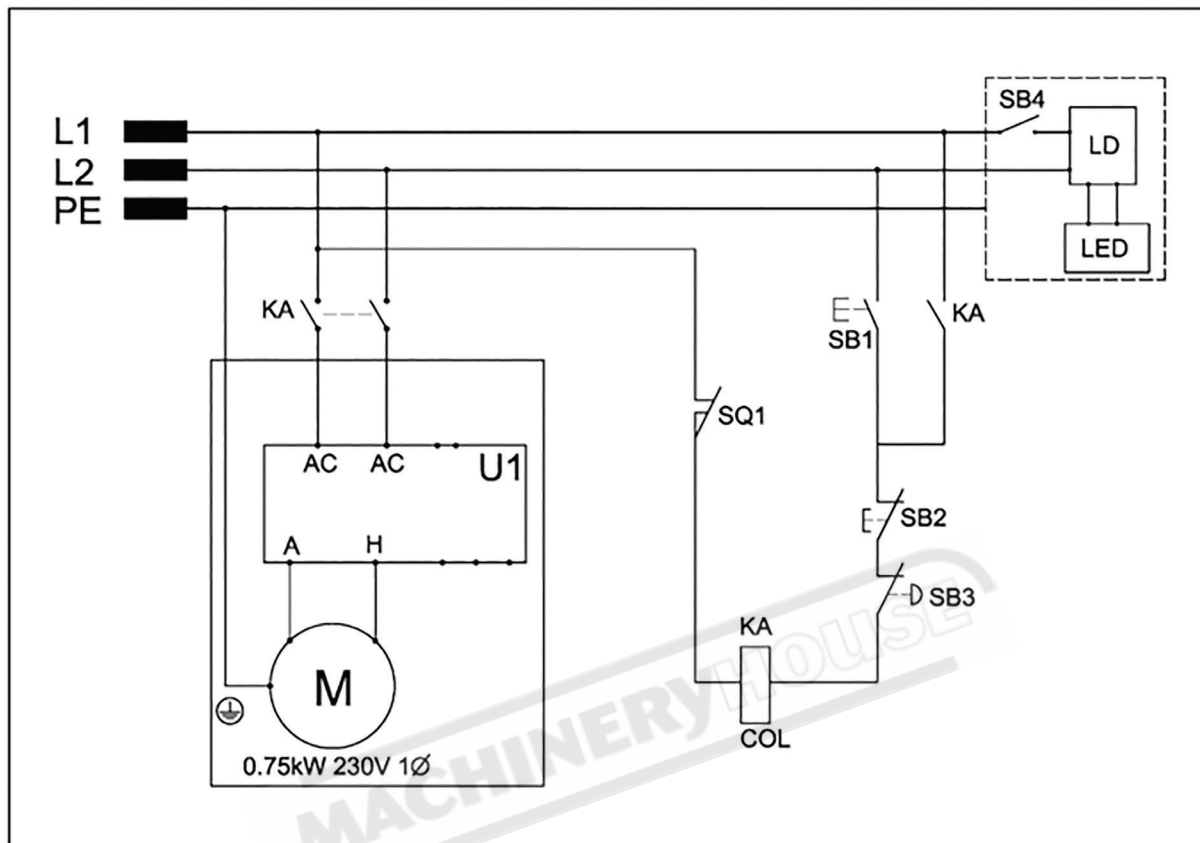
190-S1 SAFETY GUARD(LED)0.1"



No.	Description	No.	Description
1	Base	78-S1	Screw
2Z	Column Set	78-S2	Hex Nut
2-S1	Bolt	91	Hex Wrench
2-S2	Spring Washer	101D	Micro Switch Base
5Z	Table Bracket Set	101Z	Micro Switch Bracket Set
8	Worm Gear	101-S1	Screw
9	Table Handle	101-S2	Screw
9A	Handle Bolt	102S	Safety Guard
16	Clamp Handle	102SZ	Safety Guard Set
18	Table	102A	Safety Guard Slide
19	Rack	102-S1	Lead Bolt
20Z	Column Bearing Collar	102-S2	Screw
22	Head Body	102-S3	Washer
22A	Feed Shift Cover	103IZ	Bracket Rod Set
22B	Head Body Cover	103-S1	C-Ring
22C	Head Body Cover	103-S2	Washer
22D	Baffle Board	103-S3	Screw
22E	Safety Washer	104	Emergency Stop Switch
22-S1	Screw	803	Switch Cover
22-S2	Pin	803-S1	Screw
22-S3	Set Screw	OLB-A	LED Work Lamp
22-S4	Screw	OLB-B	LED Work Lamp Switch
22-S5	Spring Washer	OLB-S1	Hex Nut
22-S6	Screw	OLD	LED Driver
22-S7	Cable Fixing Head		
35Z	Feed Shaft Set		
35-S1	Hex Nut		
38	Key		
40	Feed Handle		
41	Grip		
42Z	Scale Ring Set		
44	Scale		
45	Rivet		
47	Spring Cap		
52Z	Quill Set		
53	Rubber Washer		
65	Taper Arbor(Optional)		
66	Drill Chuck(Optional)		
67	Drill Shifter		
68	Motor		
68-S1	Screw		
68-S2	Spring Washer		
78	NVR Switch		

NOTE: SOME INDIVIDUAL PARTS MAY ONLY BE AVAILABLE AS AN ASSEMBLY

ELECTRICAL DIAGRAM



Part No.	Component/Object	Type	Technical Data	PCS	Part No.
M	Motor	PD-28V Series	BLDC 230V / 1PH / 0.75kW	1	68
U1	Motor Controller		DC 230V 1.2kW		
SB1	Push Button ON	KJD12	AC 220V~240V / 16A	1	78
SB2	Push Button OFF				
SB3	Emergency Stop	A2-RPR01R	AC 240V / 3A	1	104
SB4	LED Work Lamp Switch	QLB-RS15B	AC 250V / 3A	1	OLB-B
LD	LED Driver	QLD-3W220	85-265V	1	OLD
LED	LED Work Lamp	QLB-345	3W/3.4V	1	OLB-A
SQ1	Micro Switch	VM5-00N	250V 5A	1	101-Z



WARNING!

*Electricity is dangerous and could cause death
All electrical work must be carried out by a qualified electrician.*